



MedicalBx

A Specialized-Hospital Providing Medical Solutions to Minimize Human Suffering, and To Enhance Health Equity and Health Justice

Rapidly Deployed Medical Prefabricated Specialized-Hospital, ER/Clinic, and Telemedicine Suite

Goal: To create a functional and practical small-format micro-hospital for use in remote areas.

MedicalBx's Specialized-Hospital addresses the specific healthcare needs of small, medium and large towns, villages and rural communities by offering a middle ground between emergency clinics and research hospitals. MedicalBx understands the diverse and challenging terrain from harder to reach mountain towns to communities in the Jungle, our flexible model of hospital will allow us to reach and set up facilities in these often overlooked communities. Emergency Specialized-Hospitals are designed to quickly respond to a crisis and offer the medical equipment, resources, and longevity to serve as a basis for community health. Research and large hospitals are too resource-intensive for remote areas to support and perform many functions that would not be of use or benefit to local residents. MedicalBx's Specialized-Hospital, by contrast, offers the full range of medical capabilities afforded by a larger facility, from surgery and maternal health to telemedicine and primary care, in a compact, portable package. Every MedicalBx hospital bed is outfitted with a telemedic system which allows for each patient to receive care from around the country, regardless of location. This access to experts using virtual care would include but not be limited to mother and child care, neoplastic care, cancer, infectious disease, cardiac care, allergy and

immunology, dermatology, neurology, and diabetic care.

MedicalBx Specialized Hospital will allow primary health care to be prioritized to strengthen prevention and bring health services closer to the population. MedicalBx will significantly improve care capacity at health centers so that no family is left without medical coverage.

By prioritizing the care, the MedicalBx Specialized-Hospital pursues health equity and health justice for the nation's under-served and marginalized populations. In an equitable healthcare system, every person has the same opportunity to achieve full health. Medical resources are often concentrated in urban centers, leaving rural communities to suffer the disproportionate impacts of disease and chronic health conditions. These health disparities between cities and towns are not incidental. Instead, they are the product of fundamental social inequalities that disadvantage rural populations.

The MedicalBx Specialized-Hospital is tailored to reform healthcare to achieve just and equitable health outcomes for its most vulnerable and as important citizens.

The key to the MedicalBx SpecializedHospital's success is in the prefabrication, coordination and expertise in public health, design, virtual healthcare, development and construction. The MedicalBx team coordinates with national and local authorities to provide a turn-key solution to healthcare throughout the world. The clinics would arrive at the hospital site nearly complete with their equipment, counters, cabinetry, and bathrooms already or nearly already installed.

These MedicalBx Specialized-Hospital structures offer several additional benefits:

- **Rapid Deployment:** Given that the units would be prefabricated and readily transportable, a hospital could be set up in 2-3 days.
- **Durability:** Owing to the high quality of its materials, the MedicalBx Specialized-Hospital would offer a long-term health equity solution. The composite panels will not rust, rot, mold, mildew, or decay. Completely man-made, the units would not be prone to infestation by insects or rodents and could last for decades.
- **Sustainability:** Due to their compact size, SpecializedHospitals would be less land, energy, and resource-intensive than bigger hospitals. They also offer the possibility of conversion to solar power to make the clinic self-sustaining.
- **Adaptability:** Over time, hospitals could swap out or add to the equipment in the medical suites to meet their changing needs.
- **Wired:** Specifically designed for telemedicine, for remote specialized care from top medical doctors and experts around the country (and the world). (e.g., Mother And Child Care, Neoplastic Care, Infectious Disease, Cardiac Care, Allergy and Immunology, Dermatology, Neurology, Mental Health and Diabetic Care)



MedicalBx Specialized-Hospital

Each MedicalBx Specialized-Hospital would include the following (Project dependant):

- **Emergency and Primary Care Facility:**

This facility would be devoted to a primary care clinic and 12-bed emergency room (ER) outfitted for telemedicine. Featuring adult and pediatric examination tables, eye care equipment, and weighing scales and stocked with diagnostic equipment, the room would give healthcare personnel full capability to address the overall wellbeing of local patients. This primary care area would be positioned in the center of the room. Curtains would partition the remaining space along the unit's walls into 16 total cubicles. Each cubicle would accommodate a low-to-moderate care hospital bed, the patient's infusion stand and vital signs monitor, and trolleys for oxygen and additional equipment.

◇ **Telemedicine:** Real-time video chat now affords the possibility for a trained in-person technician along with a remote expert and or medical doctor to provide specialized care to patients. By drawing on the expertise of remote medical doctors, telemedicine allows staff to quickly respond to emergencies without waiting on a specialist. Every hospital bed in MedicalBx would be equipped for remote monitoring and telemedicine. In addition to the equipment described above, each of these cubicles would contain an advanced remote video monitor and 3 digital hospital cameras allowing for every patient to have access to specialized care.

- **Mother and Child Health, Delivery and Surgery, Postpartum Care:** Hundreds of thousands of women and babies in the developing world die every year from causes related to pregnancy and childbirth that could have been prevented with skilled pre-and-postnatal care. To mitigate this public health crisis, the OT will share an RDS or conjoined container unit with a maternity clinic. Featuring a gynecological exam chair, birthing and recovery beds, an infant incubator, and its own oxygen set, the maternity unit would be prepared to provide local women with everything from routine exams to emergency Cesarean sections.

- **Clinical-Surgical Operation Theatre (OT):** The Specialized-Hospital clinical/surgical suite would allow rural clinics to deliver the same level of intensive care provided by larger hospitals in a fraction of the space and at a lower cost. Prebuilt into half of a RDS or conjoined shipping container unit, the OT would arrive with all necessary equipment including an electrosurgical unit, anesthetic machine, diagnostic stack, and oxygen regulator. As with all Specialized-Hospital suites, all surfaces could be disinfected to ensure a clean environment.

- **Mental Health Care via Telemedicine Suite:** Private telemedicine counseling, anxiety, depression, alcoholism, drug abuse and addiction, marriage counseling,

- **Intensive Care Unit (ICU) / Recovery Room:** Patients suffering from serious illness or recovering from surgery would receive treatment in the clinic's smaller RDS or container unit. The space would cater to these higher-risk individuals with 2 ICU beds, ventilators, patient monitoring systems, IV pumps, and a defibrillator. A negative air filtration system and external decontamination chamber would reduce the risk of infection for staff and other patients receiving treatment at the clinic.

- **Multipurpose Unit:** The third unit would provide a multipurpose space suitable for a variety of facilities according to the clinic's demands, including:

- ◇ **Bathroom:** The bathroom, easily accessible to staff, would contain a toilet, shower, and sink.

- ◇ **Pharmacy:** The versatility, reliable air quality and flow control, and security of the MedicalBx Specialized-Hospital would make the module an ideal environment for storing and handling medication and vaccines. The pharmacy area would include a large medical storage cabinet and a laboratory refrigerator.

- ◇ **Staff Area:** A staff area would include a dressing area fitted with lockers and a breakroom.

- ◇ **Storage:** Wall-mounted sets of lower and upper cabinets would house consumable supplies, durable medical equipment (DME), and tools.

- **Kitchen:** Food is medicine, and proper, healthful food needs to be prepared each day for all patients.

- **Covered Walkway:** A covered walkway would span the width of the Specialized-Hospital and connect the four RDSs or container units. This hallway would accommodate the movement of gurneys, medical carts, and beds and allow easy access to all facilities.

- **Reception and Triage Area:** To maximize space, Specialized Hospitals would provide a reception and triage area to screen and assist patients.



Additional Features (These features are project dependant):

- **Climate Control:** Each unit would have heating and air conditioning to ensure the comfort of patients and healthcare providers. This would be accomplished using portable environmental control units (ECUs) attached to the outside of the modules. Climate control would also help to prevent the degradation of medicine and computerized equipment stored in the hospital.
- **Air Quality:** All rooms in the MedicalBx Specialized-Hospital would use overpressure ventilation and perform ozone disinfection on the exhaust air.
- **Plumbing and water system:** Water used in the clinic's bathrooms and medical facilities could be processed through an internal 3-step purification system. This would generate potable water for MedicalBx Specialized-Hospitals and allow them to operate in areas lacking water infrastructure.
- **Sterilization Units:** Autoclaves and sterilization drums in the surgical and maternity units would allow staff to clean and disinfect reusable medical equipment.
- **Electrical Wiring:** Clinics would operate using a 120V and or 220V electrical system and come equipped with power sockets featuring automatic fuses.
- **Back-up Generator:** Clinics have an optional diesel-powered generator to ensure reliable power.
- **X Ray:** A mobile X Ray would be kept in the storage area and wheeled out for use in the surgery suite, maternity unit, or primary care facility. Darkroom equipment and an X Ray viewer also kept in the storage room would allow doctors and nurses to process and analyze the film on-site.
- **Remote Patient Monitoring:** New, approved remote monitoring systems now allow hospitals like the MedicalBx Specialized-Hospitals to automate their processes and streamline their workflow. The systems allow real-time vitals to be broadcasted to any device in any location through the cloud. This reduces errors and allows hospitals to scale up seamlessly, elevating their standards of care even as they increase their number of patients.

♦ **Data Insights:** Actionable reports provide insights on clinical performance metrics to drive change such as to better select patients and improve facility operations.

♦ **Data Integration:** Automated vitals collection eliminates manual charting and documentation errors, and digitizes paper-based data.

♦ **Connected Care:** Monitor patients at the bedside, nursing station computers, clinician mobile devices, and more.

- **Security:** MedicalBx Specialized-Hospitals would use door locks, surveillance cameras, and an alarm system to protect the valuable equipment and medication inside. The unit would be equipped with 12 security cameras: one each in the OT, maternity clinic, multipurpose space, and ICU/recovery area, two in the ER/primary care space, four on the building's corners, and two inside the covered walkway. Each of the clinic's four doors would be furnished with an entry sensor and a motion sensor. These sensors would connect to an alarm base station within the unit, an app on the hospital administrator's smartphone, and a 24/7 professional monitoring service. In the case of a power outage, the system would continue to protect the MedicalBX Specialized-Hospital for 24 hours only if cellular service is available.

MedicalBx Team

Nicholas Z Froner, MA, MBA Co-Founder and Managing Director

Mr. Froner, was one of the youngest production and facility manager's of Landmark Education responsible for more than 60 staff members. Mr. Froner has a legal background focusing on transactional contract law. Froner is an entrepreneur specializing in startups focusing in the mining and construction industry in Latin America. Additionally, Mr. Froner developed a company focusing on the agriculture marketplace in Western Africa. Currently, Froner is the CEO of GBT Global LLC with offices in the USA and Peru. Mr. Froner developed and designed a patented innovative tool which reduces the environmental footprint of heavy machines and provides added efficiency in the mining. These tools are produced in Peru and utilized all over the world. Froner specializes in representing corporations and brands entering the South American market as well as acting as a bridge for US companies to LATAM. He is a member of the Oxford Union and the Oxford and Cambridge Club of London, England. Mr. Froner, received his MA from Hunter College, City University of New York and his MBA from Oxford University in England

Charles Platkin, PhD, JD, MPH Co-Founder and Director

Dr. Platkin is a public health advocate and health-tech innovator with a breadth of experience and expertise. Dr. Platkin is a Distinguished Lecturer at Hunter College, City University of New York and the Executive Director of the Hunter College NYC Food Policy Center, as well as a health expert and blogger featured on Everydayhealth.com and Active.com. Dr. Platkin has founded several companies, including: Diet Detective, a syndicated health, nutrition and fitness column. DietDetective.com appears in daily newspapers and media outlets around the US, has more than 500 articles and interviews on nutrition, food, and fitness;

Integrated Wellness Solutions (IWS) which worked to develop corporate wellness initiatives including online health tools, as well as print related content to market health behavior change (e.g., BNSF Railroad, BCBS, United Healthcare, GM). IWS also worked with pharmaceutical companies (including Roche and Pfizer) creating digital strategies and tools to assist with patient behavior change. These programs included the first Registered Dietitian nutritional counseling via email; and Marinex, a forerunner in health consulting and media relations. Platkin founded The Health Lab to collaborate with innovators and entrepreneurs to create sustainable, commercially viable businesses that solve health-related problems. Platkin is the founder of the Food as Medicine Project.

Dr. Platkin is a co-founder and strategic adviser at Diversion Books, a leading eBook publisher. Platkin is also a real estate developer, attorney, and consultant. He received his undergraduate degree from Cornell University, a law degree from Fordham University, a Master of Public Health from Florida International University, and a Ph.D. in Public Health from Florida International University.

Sandro O. Montebalco, Esq Legal Counsel

Montebalco & Associates, LLC is a full-service, international boutique law firm headquartered in Lima, Peru. The firm also has offices in Madrid, Spain, and its primary office in New York. Founded in 2000, the firm's services include strategic defense in international child abduction under the Hauge Convention, divorce, immigration law, criminal defense, maritime, mining, and corporate law.

The firm's Managing Partner is attorney Sandro O. Montebalco, who has years of experience in criminal law as well as in the recovery of Parental Child Abduction in Peru, the United States, and Spain.

The legal team at the firm is comprised of former prosecutors and even a former judge, all of whom represent a wide array of clients diligently and passionately.

The firm's Madrid and New York offices handle primarily corporate and immigration matters, employing licensed professionals thoroughly versed and experienced in the various legal aspects of the practice.

Carlos Saavedra Carvo, MBA

Carlos Saavedra Carvo is a senior executive with 20 years of management experience. The scope of his experience includes marketing, sales, business development, operations, and IT. Mr. Saavedra is an expert at the monitoring of goals and objectives with successful results through leadership, teamwork, and motivation; always considering a participative leadership based on ethics and responsibility.

Mr. Saavedra's skills include the radical increase in sales and or margin; development of multidisciplinary teams committed to goals and strong organization tides; difficult environment negotiation skills and fast environment adaptation. He is expertise is in finance, distribution, and sales. Mr. Saavedra has consulted for International Trucks Peru, Fotomagic, Derco, Acosa, Indumotora, HR Tractor, Dipo, Electralandia, Perú Desarrollo, and Engriete.com. He has also been employed as a director for Bina Ingenieria, a general manager for Cassa Concesionaria, a division manager for La Llave Sa. (Fadesa Group), a business manager for Gildemeister Corp (Ford - Hyundai), Empresas Polar as a marketing brand manager, and Incae (Cost Rica) as a marketing researcher. Mr. Saavedra has successfully developed projects all over the world, but specifically in Peru, Costa Rica, Venezuela, Colombia, the US and Canada.

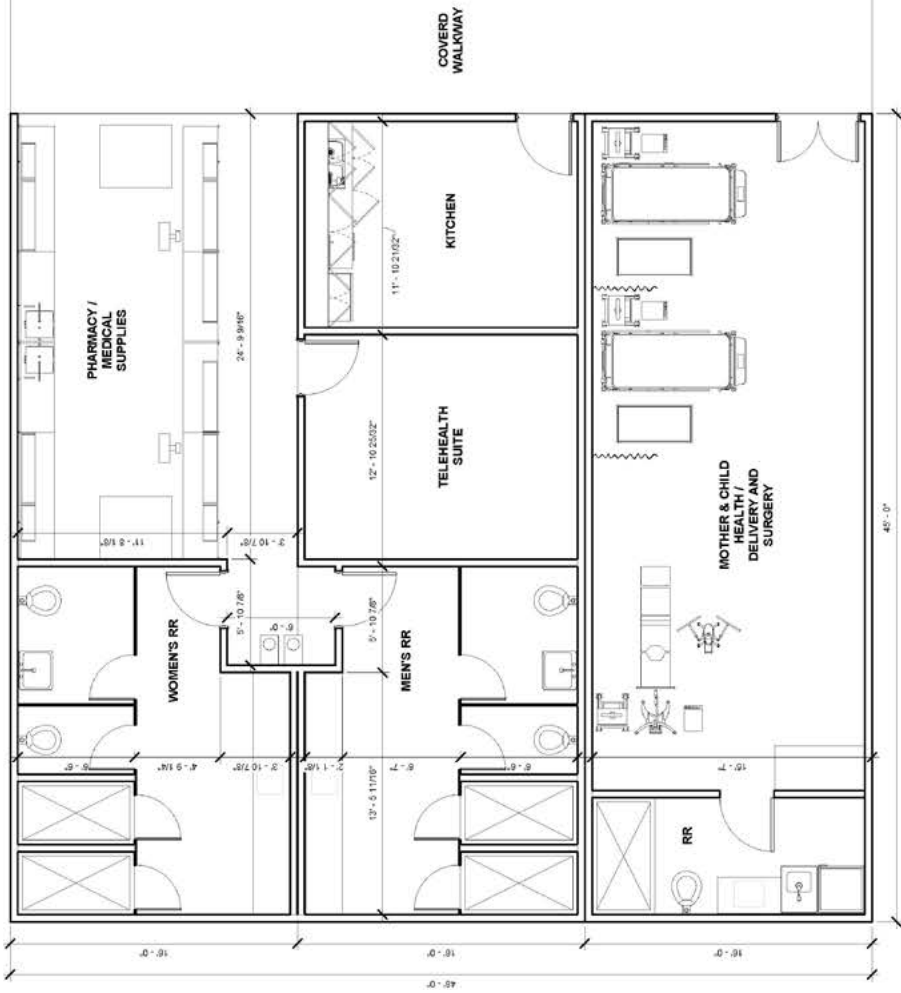




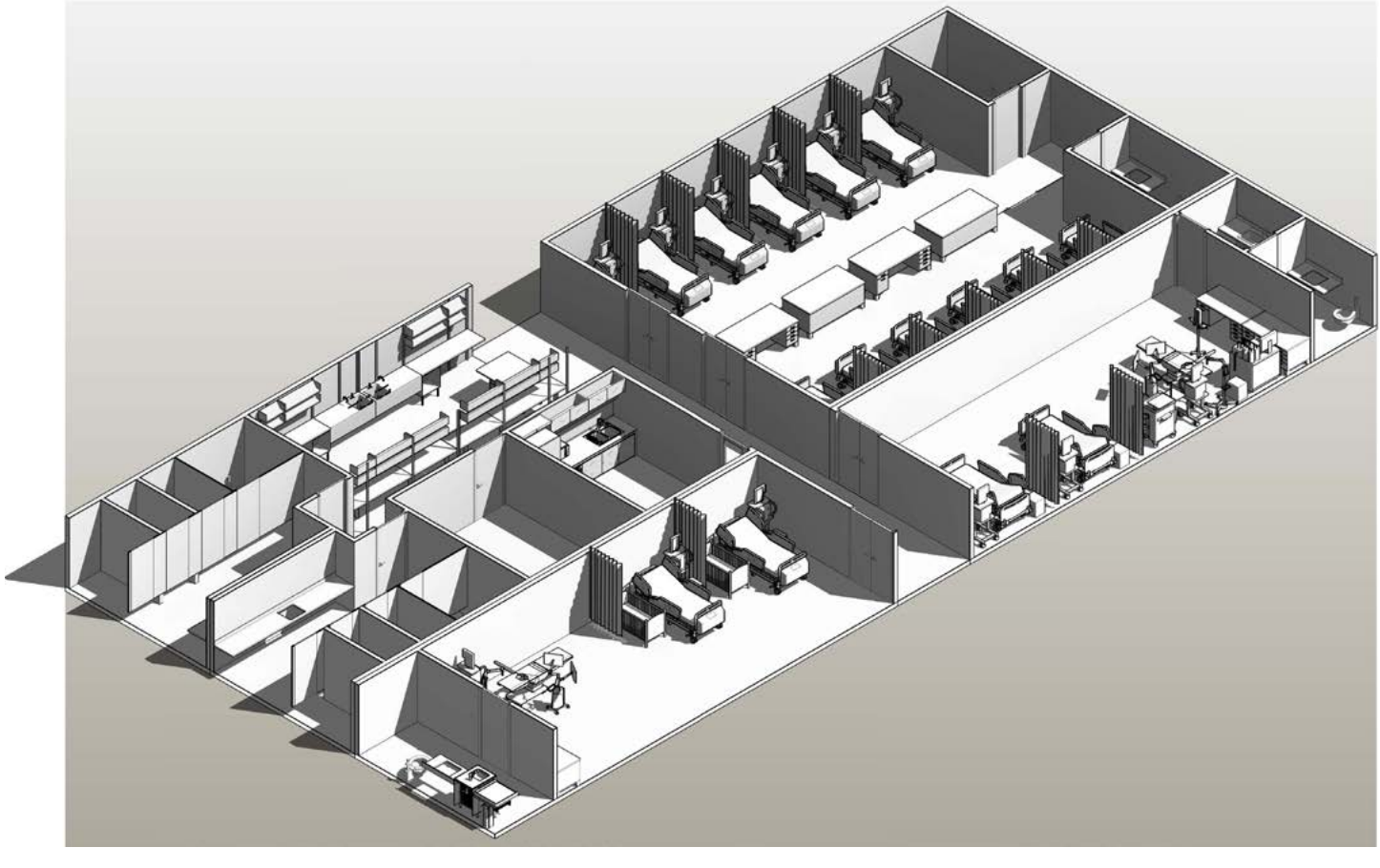
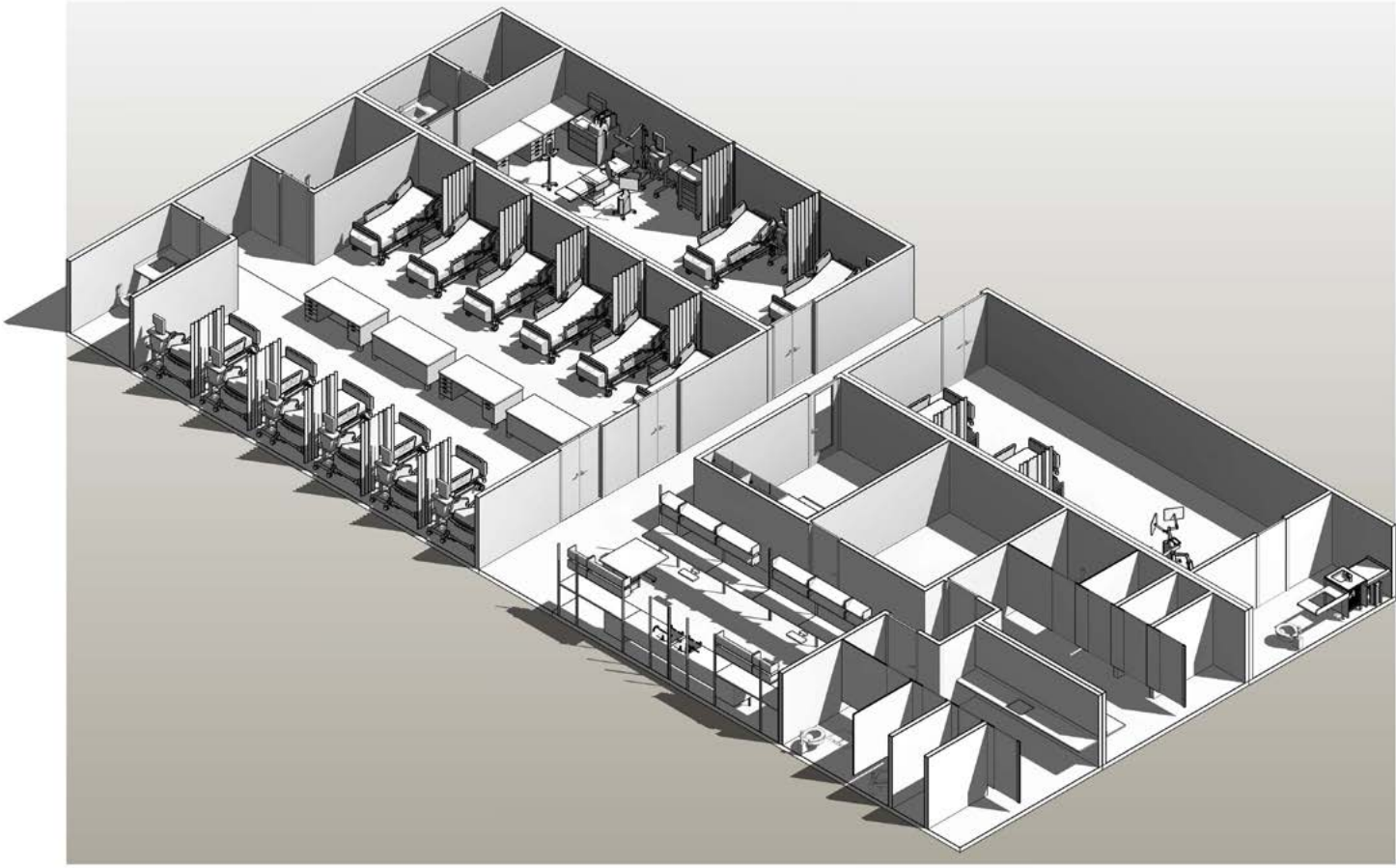
Project A

Speciality Hospital 16-Bed Unit
with Telehealth, Emergency,
Surgery, Mental Health and
Mother and Child Health





1 1ST FLOOR PLAN
1/4" = 1'-0"



Project A Includes the following items with a breakdown below:

Overview

- Surgery Suite
- Maternity Unit- 2 Beds
- ER / Clinic- 12 Beds
- Pharmacy / Staff Room / Telemedicine
- X Ray
- Air Filtration Systems
- Water Purification System
- Security

Surgical Theatre and Suite

- Air conditioning
- Anaesthetic machine
- Aprons (2000)
- Autoclave
- Blood pressure measuring equipment.
- Curtains (2)
- Defibrillator
- Electrical
- ECG Monitor
- Electrosurgical unit
- Forceps, artery
- Forceps, kocher
- General surgery kit (scissors, etc.)
- ICU beds (2)
- Infusion pump (2)
- Infusion stands (2)
- Instrument trolley
- Laryngoscope
- Lighting
- Lower cabinets with sink
- Masks and tubing to connect to O2
- Medical handicap toilet
- Nail brushes
- Operating theatre lamp, mounted
- Oropharyngeal airway, adult
- Oropharyngeal airway, child
- Otoscope
- Oxygen regulator
- Oxygen source
- Paper towel dispenser

- Patient monitors (12)
- Patient trolley
- Plumbing
- Pulse oximeter
- Resuscitation bag
- Resuscitation bag, child
- Scalpels, #3 handle
- Scalpels, #4 handle
- Sharps container
- Shower
- Sink
- Speculum
- Sterilization drum
- Suction machine, electric
- Surgeon's stool
- Surgical table
- Syringe pumps (2)
- Thermometer
- Tourniquet
- Towel cloth
- Trolley, general purpose
- Trolley, instrument
- TV monitors (2)
- TV mounts, extendable (2)
- Upper cabinets
- Ventilators, adult (2)
- Vital signs monitors (2)
- Wash basin
- Waste disposal container

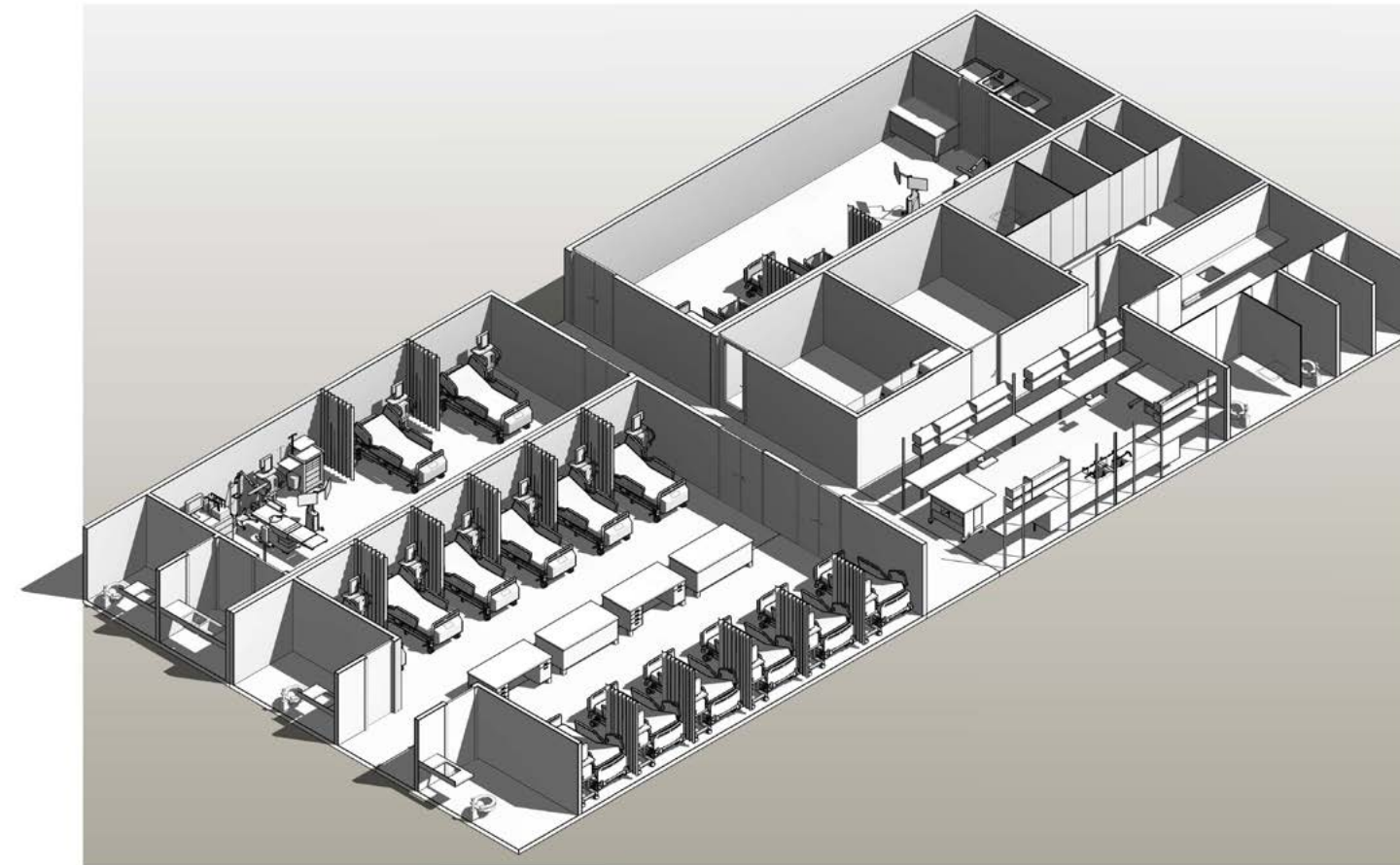
Mother and Child Health Includes:

- Air conditioning
- Autoclave
- Curtains (4)
- Defibrillator
- Blood warmers (2)
- Cesarean section sets (2)
- Electrical
- Examination lamps (2)
- Fetus detectors (2)
- Gynecological exam chair
- Hospital bassinets (2)
- ICU beds (2)
- Incubator, infant (2)

- Infant radiant warmer2
- Infant stethoscope (2)
- Infant weighing scale
- Infusion stands (2)
- Lighting (1)
- Lower cabinets with sink
- Medical handicap toilets (1)
- Paper towel dispensers (1)
- Patient monitors (2)
- Plumbing
- Oxygen sets (6)
- Resuscitaire (6)
- Showers (2)
- Sinks (2)
- Sphygmomanometers (6)
- Suction machines, electric (6)
- Syringe pumps (6)
- Trolley, general purpose
- Trolleys, instrument (2)
- Ultrasonic nebulizers (6)
- Ultrasound, wireless
- Upper cabinets
- Ventilators, adult (6)

Emergency Room / Clinic / Telemedicine (12 Beds)

- Air conditioning
- Commode chair (2)
- Corneal trephine
- Curtains (10)
- Diagnostic sets (4)
- Digital cameras (48)
- Electrical
- Emergency lamp
- Exam table
- Examination light
- Eye chart
- Eye loupe
- Eye tonometer
- Focimeter (240)
- Infant weighing scale
- Infusion stands (12)
- Lighting (2)
- Low/medium-care beds (12)
- Medical handicap toilets (2)



- Oxygen sets (8)
- Paper towel dispensers (6)
- Patient trolleys (8)
- Pediatric examination table
- Percussion hammers8
- Plumbing
- Showers (2)
- Sinks (3)
- Sphygmomanometers (3)
- Stethoscopes (36)
- Stethoscopes, baby
- Suction machines, electric
- Tables (4)
- Thermometers
- Thermometer covers
- Trolleys, general purpose (2)
- Trolleys, instrument (4)
- Trolleys, linen
- Trolleys, medicine/drug
- Trolleys, oxygen gas cylinder (2)
- TV monitors (12)
- TV mounts, extendable (12)
- Weighing scale
- Wheel chairs (6)

Pharmacy / Staff Room / Telemedicine

- Air conditioning
- Computers (5)
- Computer monitors (5)
- Computer mice (5)
- Conference room monitor
- Electrical
- Keyboards (5)
- Kitchen
- Laboratory refrigerator
- Lighting (2)
- Lower cabinets with sink
- Medical handicap toilets (2)
- Paper towel dispensers (2)
- Pharmacy cabinets (2)
- Showers (4)
- Sinks (2)
- Telemedicine conference table
- Video conferencing cameras (6)
- Toilets (2)
- Upper cabinets

X-Ray

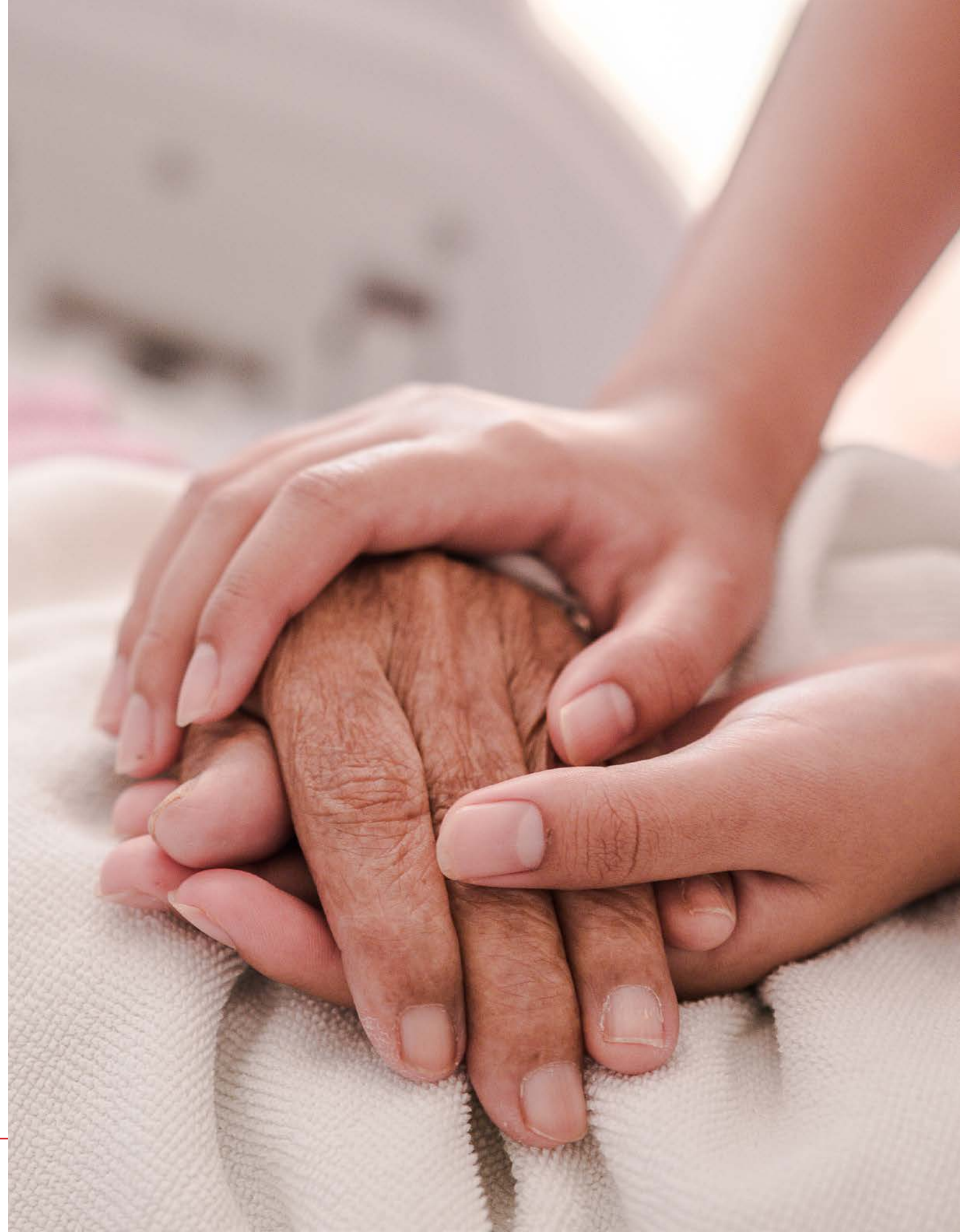
- Automatic film processor
- Cassette holder
- Developing hangers
- Film drier
- Film markers
- Mobile X Ray unit, digital
- X Ray aprons 2
- X Ray cassettes 25
- X Ray light
- X Ray stretcher
- X Ray viewer

HEPA Filtration and Water Purification

- Hepa Filtration And Negative Or (3)
- Positive Air System For Clinics
- Commercial Reverse Osmosis

Security

- Alarm system
- Security cameras20
- Monitor (3)

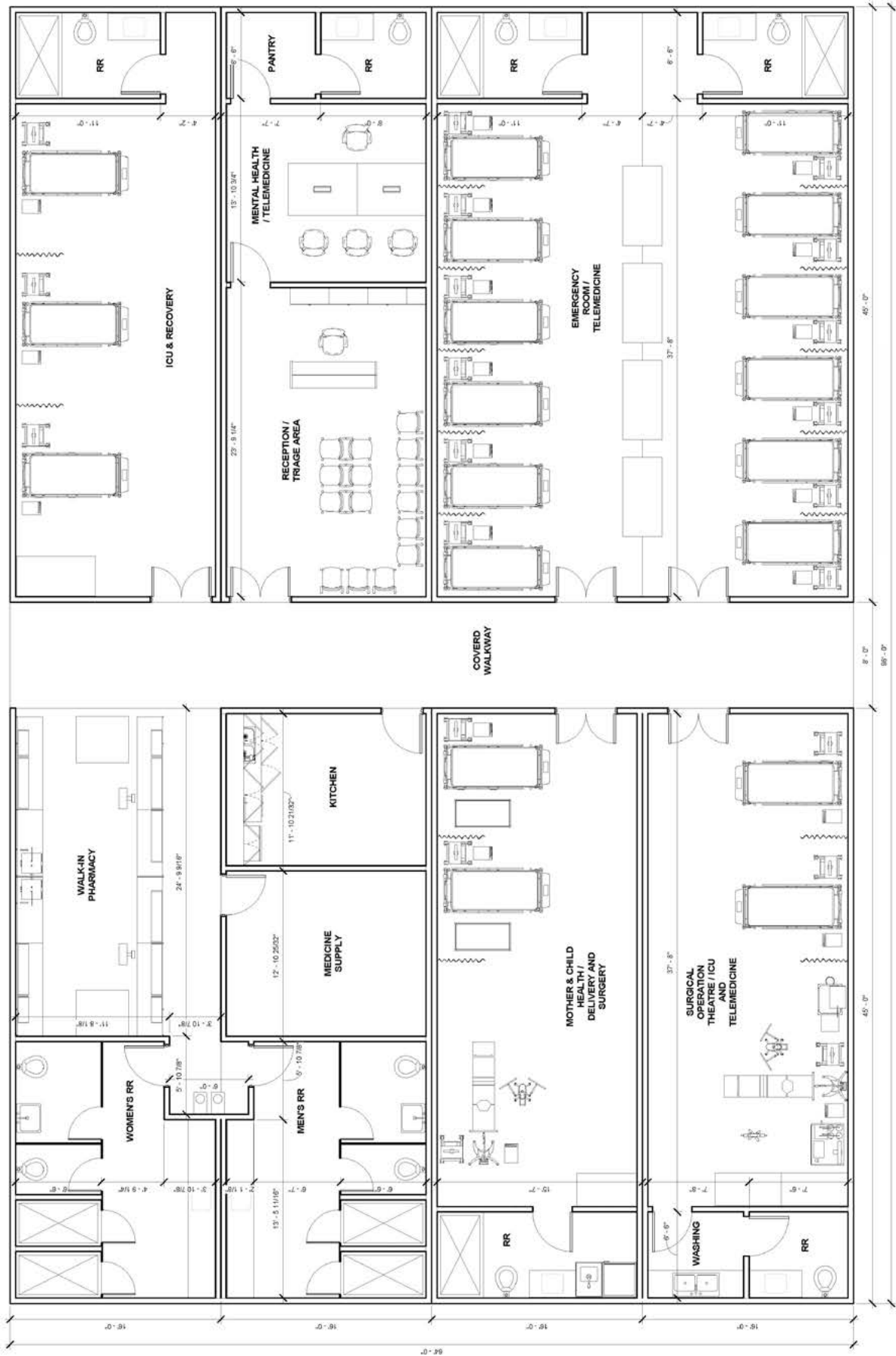




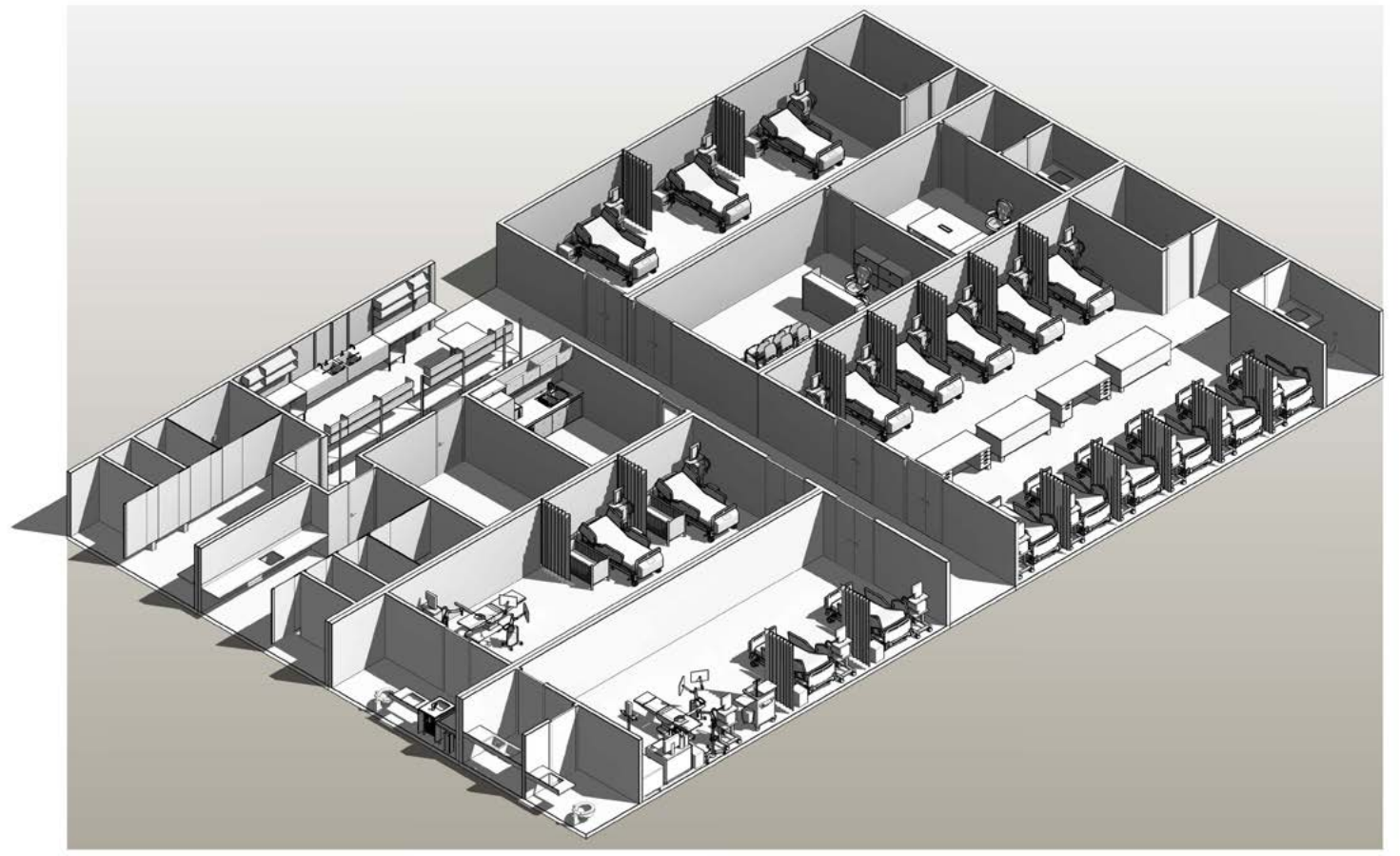
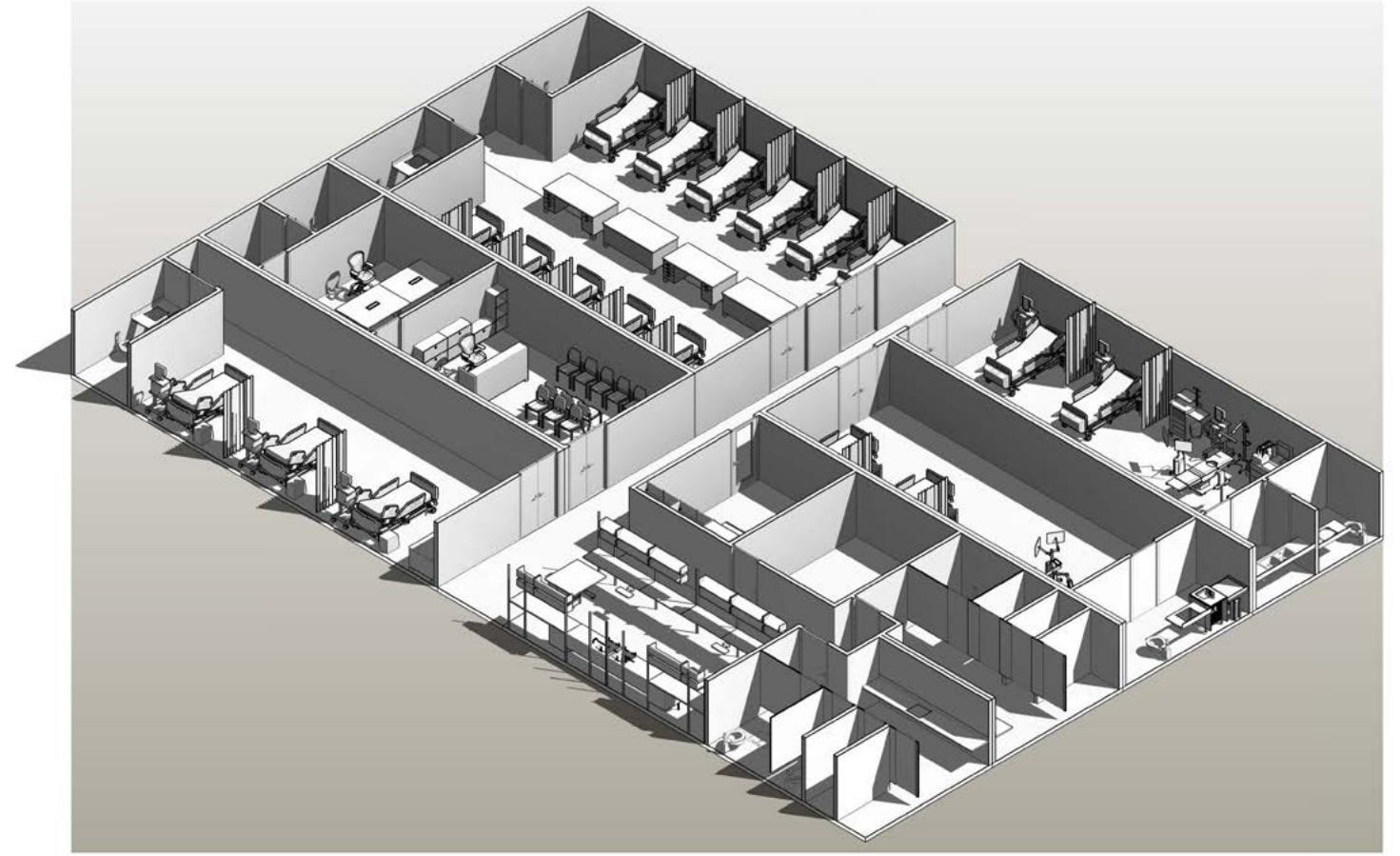
Project B

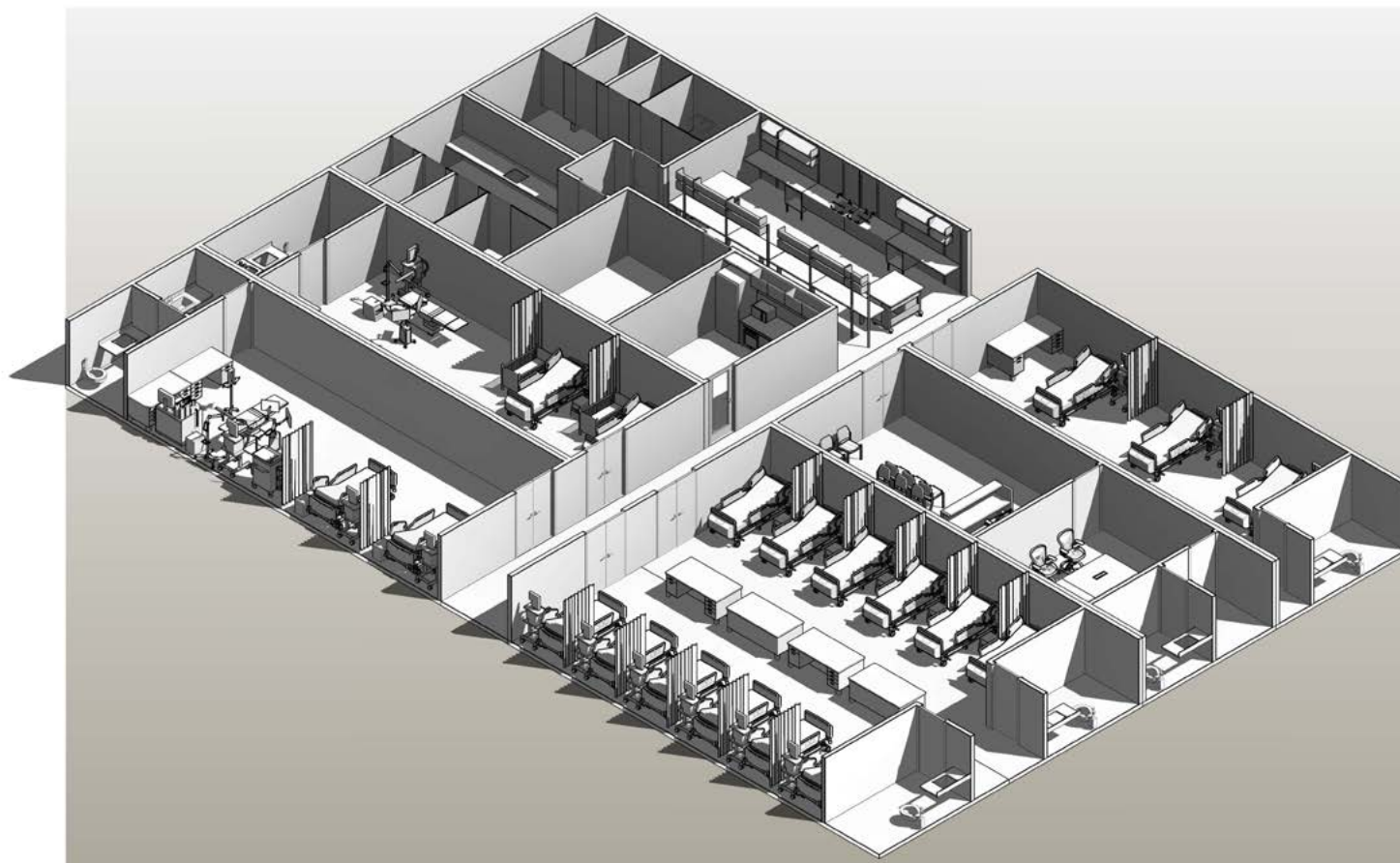
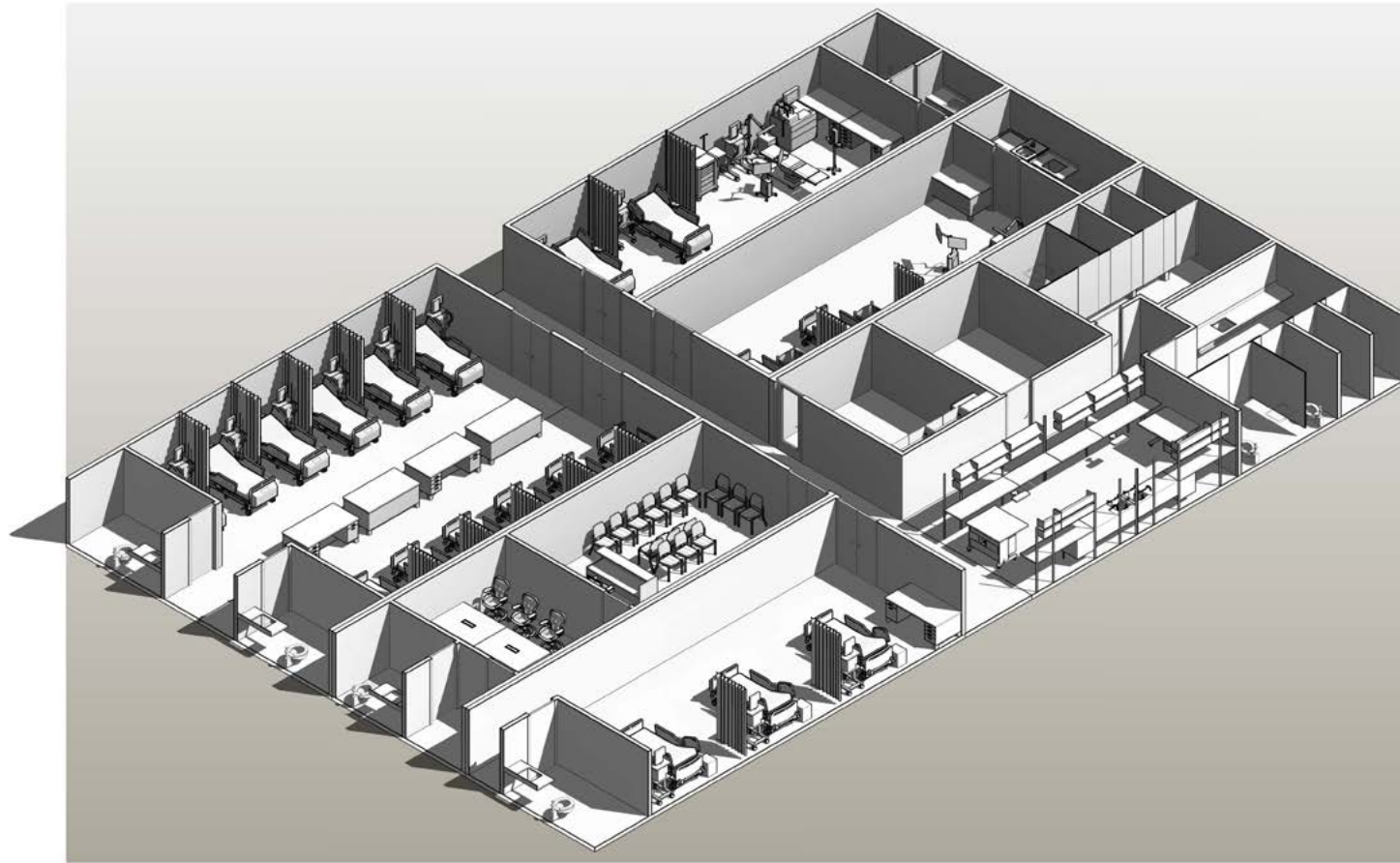
Speciality Hospital 19-Bed Unit
with Telehealth, Emergency,
Surgery, Mental Health and
Mother and Child Health





1 - 1ST FLOOR PLAN
1/4" = 1'-0"





Overview

- Surgery Suite
- Maternity Unit- 6 Beds
- ICU- 3 Beds
- ER / Clinic- 12 Beds
- Pharmacy / Staff Room / Telemedicine
- Reception / Triage Area
- X Ray
- Air Filtration Systems
- Water Purification System
- Security

Surgical Theatre and Suite

- Air conditioning
- Anaesthetic machine
- Aprons (2000)
- Autoclave
- Blood pressure measuring equipment.
- Curtains (2)
- Defibrillator
- Electrical
- ECG Monitor
- Electrosurgical unit
- Forceps, artery
- Forceps, kocher
- General surgery kit (scissors, etc.)
- ICU beds (2)
- Infusion pump (2)
- Infusion stands (2)
- Instrument trolley
- Laryngoscope
- Lighting
- Lower cabinets with sink
- Masks and tubing to connect to O2
- Medical handicap toilet
- Nail brushes
- Operating theatre lamp, mounted
- Oropharyngeal airway, adult
- Oropharyngeal airway, child
- Otoscope
- Oxygen regulator
- Oxygen source
- Paper towel dispenser

- Patient monitors (12)
- Patient trolley
- Plumbing
- Pulse oximeter
- Resuscitation bag
- Resuscitation bag, child
- Scalpels, #3 handle
- Scalpels, #4 handle
- Sharps container
- Shower
- Sink
- Speculum
- Sterilization drum
- Suction machine, electric
- Surgeon's stool
- Surgical table
- Syringe pumps (2)
- Thermometer
- Tourniquet
- Towel cloth
- Trolley, general purpose
- Trolley, instrument
- TV monitors (2)
- TV mounts, extendable (2)
- Upper cabinets
- Ventilators, adult (2)
- Vital signs monitors (2)
- Wash basin
- Waste disposal container

Mother and Child Health

- Air conditioning
- Autoclave
- Curtains (4)
- Defibrillator
- Blood warmers (2)
- Cesarean section sets (4)
- Electrical
- Examination lamps (2)
- Fetus detectors (2)
- Gynecological exam chair
- Hospital bassinets (2)
- ICU beds (2)
- Incubator, infant (2)
- Infant radiant warmer2
- Infant stethoscope (2)
- Infant weighing scale

- Infusion stands (2)
- Lighting (1)
- Lower cabinets with sink
- Medical handicap toilets (1)
- Paper towel dispensers (1)
- Patient monitors (2)
- Plumbing
- Oxygen sets (6)
- Resuscitaire (6)
- Showers (2)
- Sinks (2)
- Sphygmomanometers (6)
- Suction machines, electric (6)
- Syringe pumps (6)
- Trolley, general purpose
- Trolleys, instrument (2)
- Ultrasonic nebulizers (6)
- Ultrasound, wireless
- Upper cabinets
- Ventilators, adult (6)

ICU and Recovery

- Air conditioning
- Curtains (2)
- Defibrillator
- Electrical
- ICU beds (3)
- Infusion pumps (3)
- Infusion stands (3)
- Lighting
- Medical handicap toilet
- Paper towel dispenser
- Patient monitors (3)
- Patient trolley
- Plumbing
- Shower
- Sink
- Suction machine, electric
- Syringe pumps (3)
- Table
- Trolley, general purpose
- Trolley, instrument
- Ventilators, adult (3)

Emergency Room / Clinic / Telemedicine (12 Beds)

- Air conditioning
- Commode chair (2)
- Corneal trephine
- Curtains (10)
- Diagnostic sets (4)
- Digital cameras (48)
- Electrical
- Emergency lamp
- Exam table
- Examination light
- Eye chart
- Eye loupe
- Eye tonometer
- Focimeter (240)
- Infant weighing scale
- Infusion stands (12)
- Lighting (2)
- Low/medium-care beds (12)
- Medical handicap toilets (2)
- Oxygen sets (8)
- Paper towel dispensers (6)
- Patient trolleys (8)
- Pediatric examination table
- Percussion hammers8
- Plumbing
- Showers (2)
- Sinks (3)
- Sphygmomanometers (3)
- Stethoscopes (36)
- Stethoscopes, baby
- Suction machines, electric
- Tables4
- Thermometers
- Thermometer covers
- Trolleys, general purpose (2)
- Trolleys, instrument (4)
- Trolleys, linen
- Trolleys, medicine/drug
- Trolleys, oxygen gas cylinder (2)
- TV monitors (12)
- TV mounts, extendable (12)
- Weighing scale
- Wheel chairs (6)

Pharmacy / Staff Room / Kitchen/ Medical Supply

- Air conditioning
- Computer (2)
- Computer monitors (2)
- Computer mice (2)
- Conference room monitor
- Electrical
- Keyboards (2)
- Kitchen
- Laboratory refrigerator
- Lighting (2)
- Lower cabinets with sink
- Medical handicap toilets (2)
- Paper towel dispensers (2)
- Pharmacy cabinets (2)
- Showers (4)
- Sinks (2)
- Telemedicine conference table
- Video conferencing cameras (6)
- Toilets (2)
- Upper cabinets

Reception / Triage / Mental Health Clinic

- Air conditioning
- Cabinets
- Computer monitors (5)
- Computer mice (5)
- Conference room monitor
- Electrical
- Keyboards (5)
- Lighting
- Medical handicap toilets (2)
- Office chairs (5)
- Paper towel dispenser
- Reception desk
- Shower (2)
- Sink (1)
- Toilet
- Telemedicine conference table
- Video conferencing cameras (6)
- Waiting room chairs (15)

X-Ray

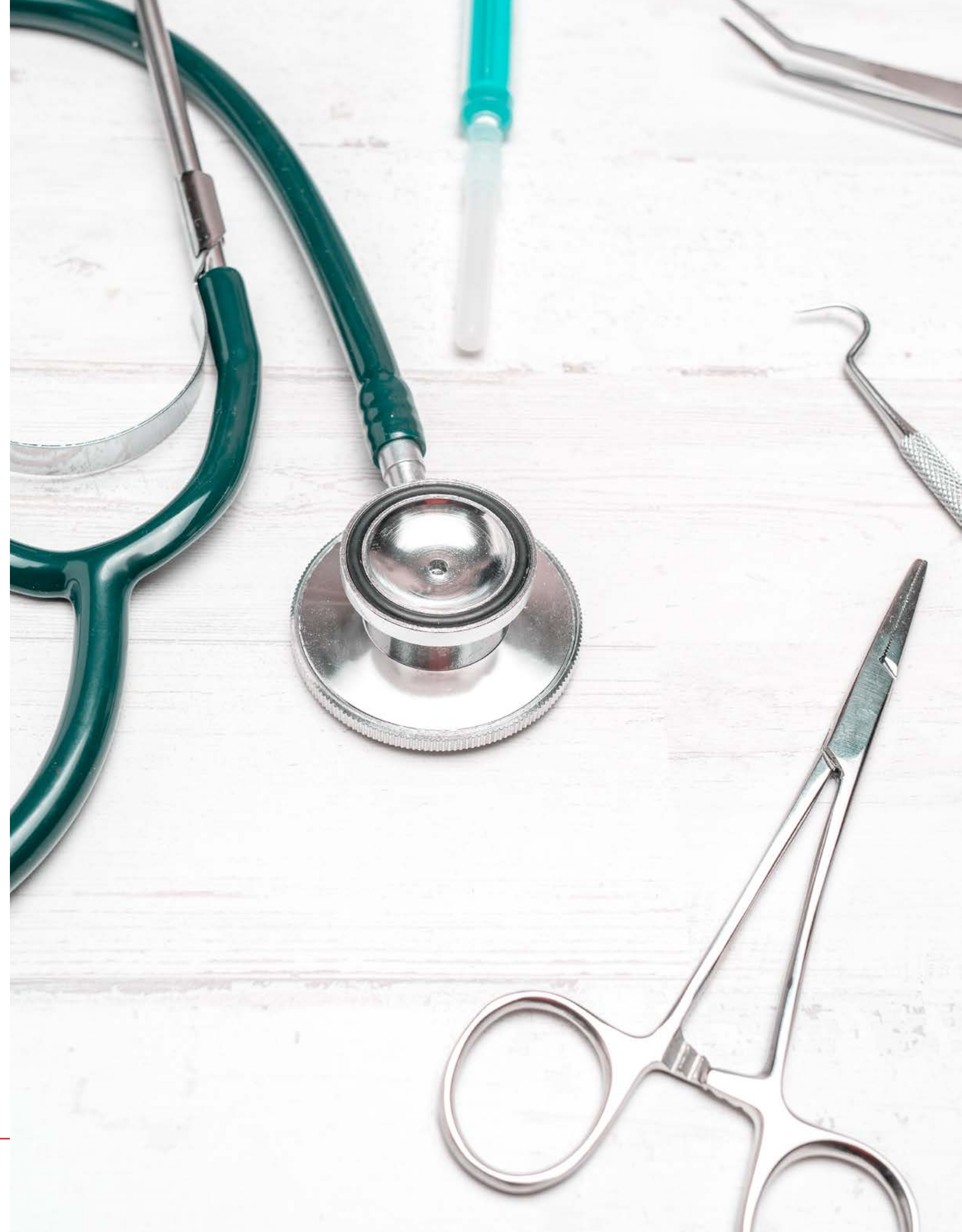
- Automatic film processor
- Cassette holder
- Developing hangers
- Film drier
- Film markers
- Mobile X Ray unit, digital
- X Ray aprons 2
- X Ray cassettes 25
- X Ray light
- X Ray stretcher
- X Ray viewer

• HEPA Filtration and Water Purification

- Hepa Filtration And Negative Or (3)
- Positive Air System For Clinics
- Commercial Reverse Osmosis

Security

- Alarm system
- Security cameras (25)
- Monitor (6)

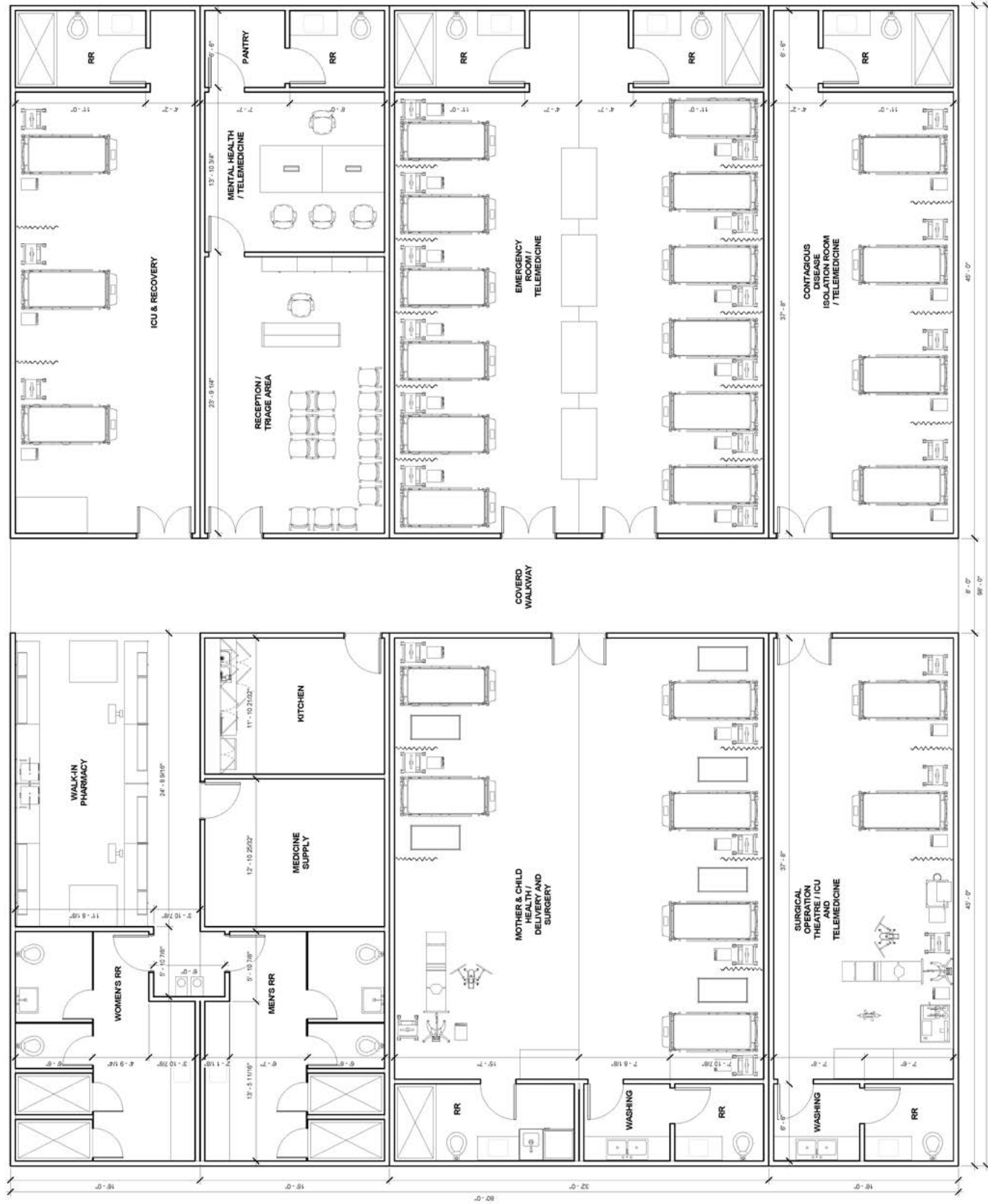




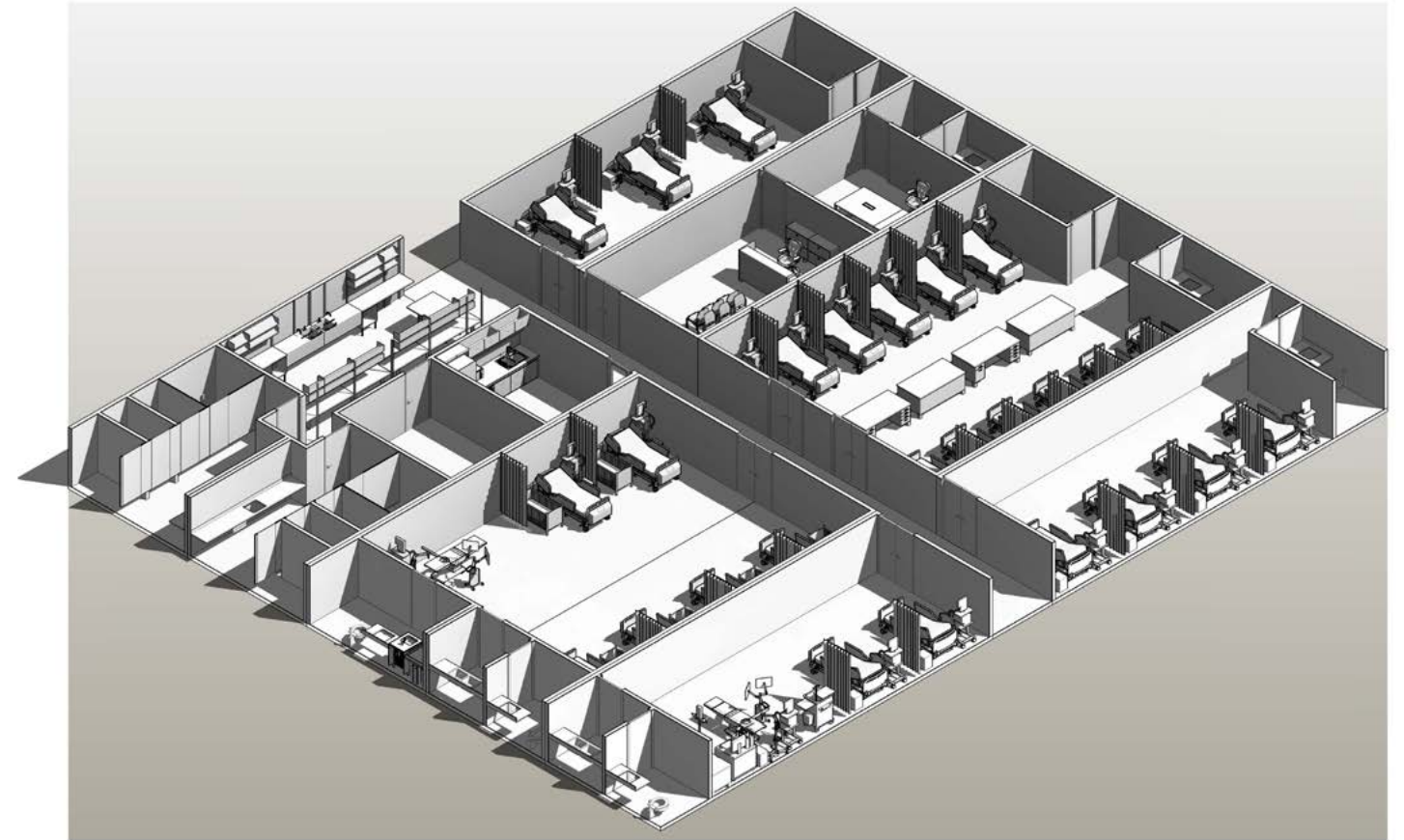
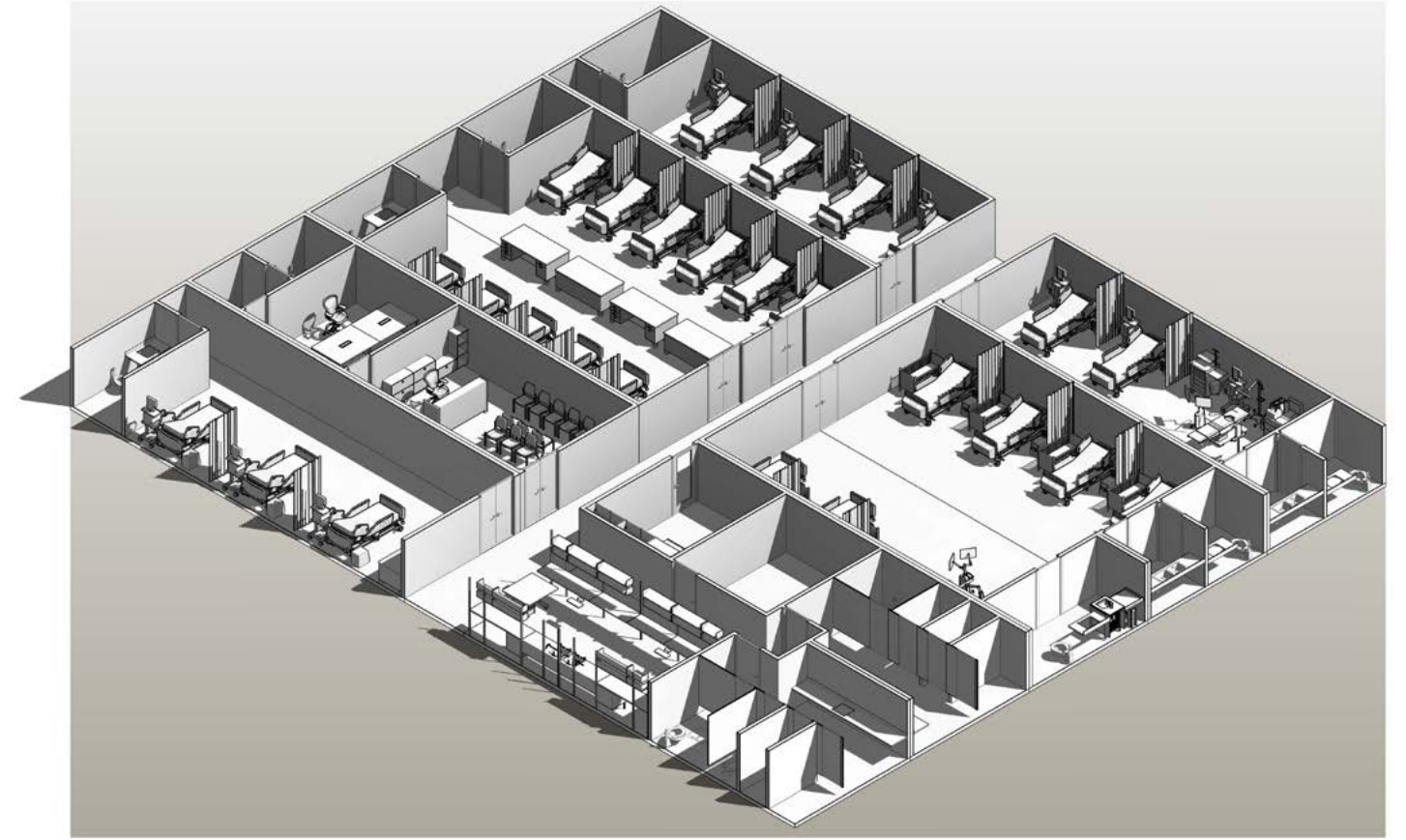
Project C

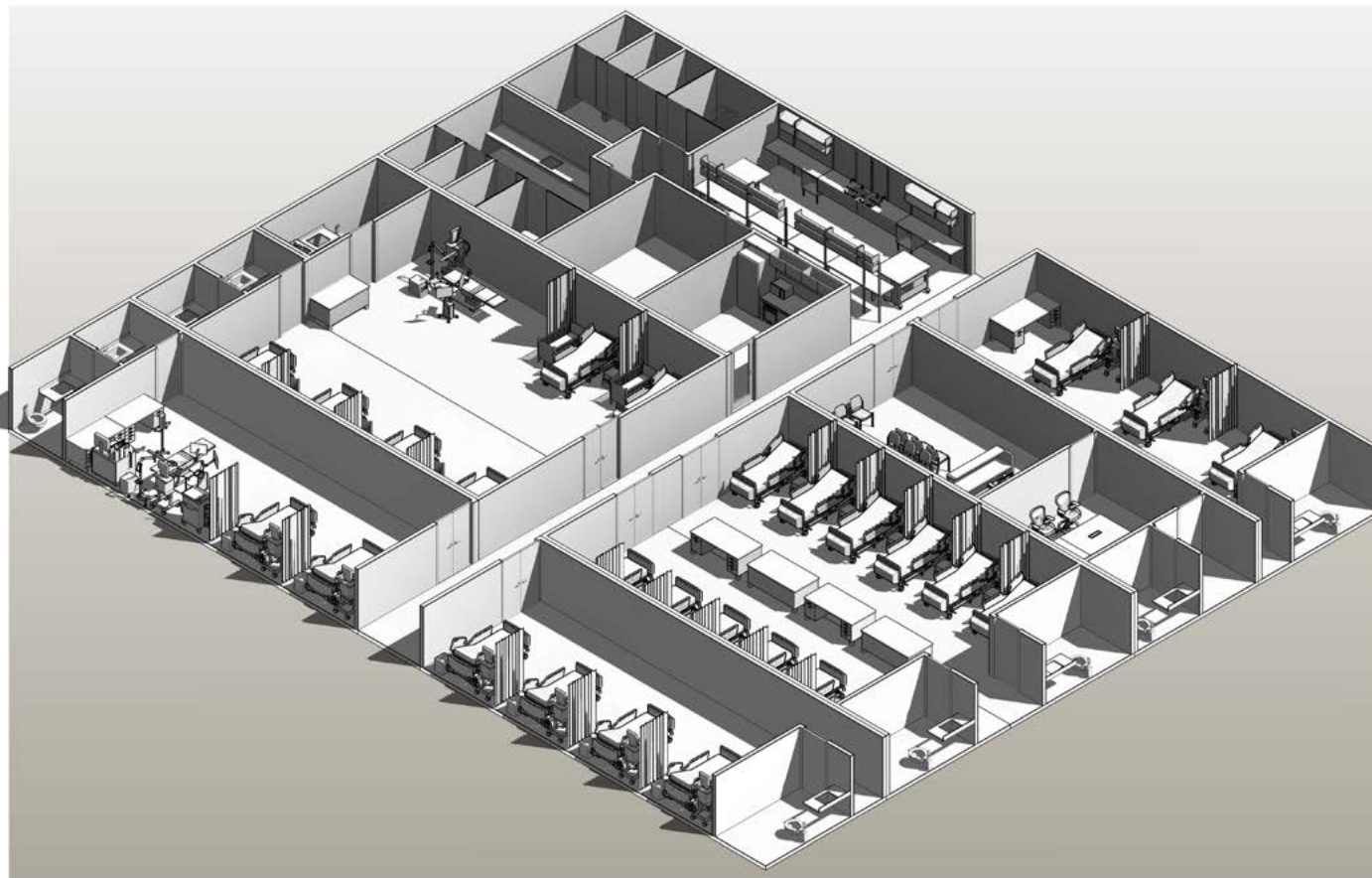
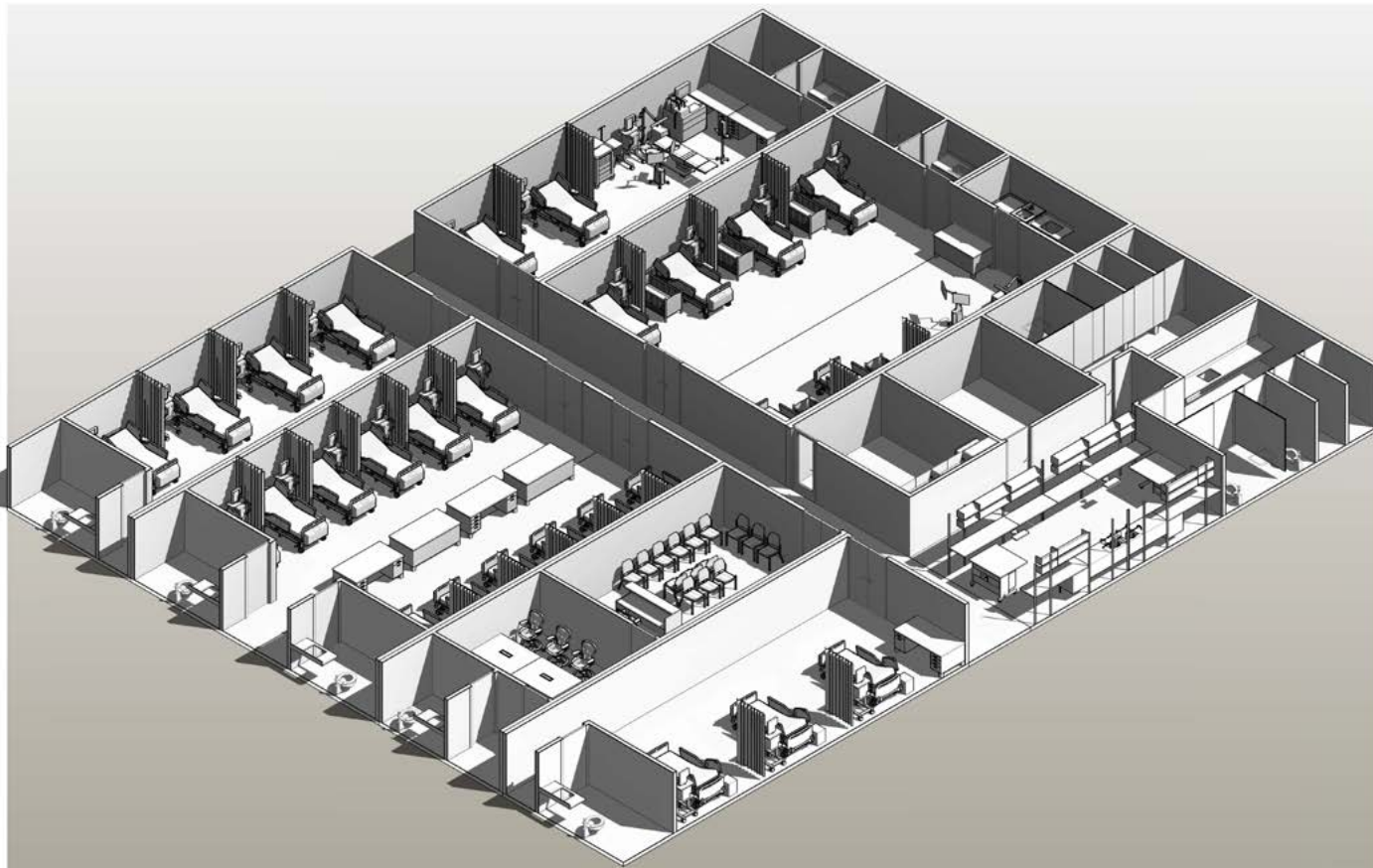
Speciality Hospital 27-Bed Unit
with Telehealth, Emergency,
Surgery, Mental Health and
Mother and Child Health





1. 1ST FLOOR PLAN
1/4" = 1'-0"





Overview

- Surgery Suite
- Maternity Unit- 6 Beds
- ICU- 3 Beds
- Infectious Disease Room- 4 Beds
- ER / Clinic- 12 Beds
- Pharmacy / Staff Room
- Reception / Triage Area
- X Ray
- Air Filtration Systems
- Water Purification System
- Security
- Building / Shipping

Surgery Suite and Theater

Air conditioning

- Anaesthetic machine
- Aprons (2000)
- Autoclave
- Blood pressure measuring equip.
- Curtains (2)
- Defibrillator
- Electrical
- ECG Monitor
- Electrosurgical unit
- Forceps, artery
- Forceps, kocher
- General surgery kit (scissors, etc.)
- ICU beds (2)
- Infusion pumps (2)
- Infusion stands (2)
- Instrument trolley
- Laryngoscope
- Lighting
- Lower cabinets with sink
- Masks and tubing to connect to O2
- Medical handicap toilet
- Nail brushes
- Operating theatre lamp, mounted
- Oropharyngeal airway, adult
- Oropharyngeal airway, child
- Otoscope
- Oxygen regulator
- Oxygen source
- Paper towel dispenser

- Patient monitors (2)
- Patient trolley
- Plumbing
- Pulse oximeter
- Resuscitation bag
- Resuscitation bag, child
- Scalpels, #3 handle
- Scalpels, #4 handle
- Sharps container
- Shower
- Sink
- Speculum
- Sterilization drum
- Suction machine, electric
- Surgeon's stool
- Surgical table
- Syringe pumps (2)
- Thermometer
- Tourniquet
- Towel cloth
- Trolley, general purpose
- Trolley, instrument
- TV monitors (2)
- TV mounts, extendable (2)
- Upper cabinets
- Ventilators, adult (2)
- Vital signs monitors (2)
- Wash basin
- Waste disposal container

Mother and Child Care

- Air conditioning
- Autoclave
- Curtains (5)
- Defibrillator
- Blood warmers (6)
- Cesarean section sets (6)
- Electrical (2)
- Examination lamps (6)
- Fetus detectors (3)
- Gynecological exam chair
- Hospital bassinets (6)
- ICU beds (6)
- Incubator, infant (6)
- Infant radiant warmer (6)
- Infant stethoscope (6)
- Infant weighing scale

- Infusion stands (6)
- Lighting (2)
- Lower cabinets with sink
- Medical handicap toilets (2)
- Paper towel dispensers (2)
- Patient monitors (6)
- Plumbing
- Oxygen sets (6)
- Resuscitaires (6)
- Showers (2)
- Sinks (2)
- Sphygmomanometers (6)
- Suction machines, electric (6)
- Syringe pumps (6)
- Trolley, general purpose
- Trolleys, instrument (2)
- Ultrasonic nebulizers (6)
- Ultrasound, wireless
- Upper cabinets
- Ventilators, adult (6)

ICU / Recovery (3 Beds)

- Air conditioning
- Curtains (2)
- Defibrillator
- Electrical
- ICU beds (3)
- Infusion pumps (3)
- Infusion stands (3)
- Lighting
- Medical handicap toilet
- Paper towel dispenser
- Patient monitors (3)
- Patient trolley
- Plumbing
- Shower
- Sink
- Suction machine, electric
- Syringe pumps (3)
- Table
- Trolley, general purpose
- Trolley, instrument
- Ventilators, adult (3)

Infectious Disease Center

- Air conditioning
- Curtains (3)
- Defibrillator
- Electrical
- ICU beds (4)
- Infusion pumps (4)
- Infusion stands (4)
- Lighting
- Medical handicap toilet
- Paper towel dispenser
- Patient monitors (4)
- Patient trolley
- Plumbing
- Shower
- Sink
- Suction machine, electric
- Syringe pumps (4)
- Table
- Trolley, general purpose
- Trolley, instrument
- Ventilators, adult (4)

Emergency Room/ Clinic / Main Hospital 12 Beds

- Air conditioning
- Commode chairs (2)
- Corneal trephine
- Curtains (10)
- Diagnostic sets (4)
- Digital cameras (48)
- Electrical (2)
- Emergency lamp
- Exam table
- Examination light
- Eye chart
- Eye loupe
- Eye tonometer
- Focimeter 240
- Infant weighing scale
- Infusion stands (12)
- Lighting (2)
- Low/medium-care beds (12)
- Medical handicap toilets (2)
- Oxygen sets (8)
- Paper towel dispensers (6)

- Patient monitors (12)
- Patient trolleys (8)
- Pediatric examination table
- Percussion hammers (8)
- Plumbing
- Showers (2)
- Sinks (3)
- Sphygmomanometers (3)
- Stethoscopes (36)
- Stethoscopes, baby
- Suction machines, electric
- Tables (4)
- Thermometers
- Thermometer covers
- Trolleys, general purpose (2)
- Trolleys, instrument (4)
- Trolleys, linen
- Trolleys, medicine/drug
- Trolleys, oxygen gas cylinder (2)
- TV monitors (12)
- TV mounts, extendable (12)
- Weighing scale
- Wheel chairs (6)

Pharmacy / Staff Room / Kitchen

- Air conditioning (2)
- Electrical
- Kitchen (Stove, Fridge, Equipment)
- Laboratory refrigerator
- Lighting (4)
- Lower cabinets with sink
- Medical handicap toilets (4)
- Paper towel dispensers (2)
- Pharmacy cabinets (2)
- Showers (4)
- Sinks (4)
- Toilets (4)
- Upper cabinets (4)

Reception and Triage

- Air conditioning
- Cabinets
- Computer monitors (5)
- Computer mice (5)

- Conference room monitor
- Electrical
- Keyboards (5)
- Lighting
- Medical handicap toilets (2)
- Office chairs (5)
- Paper towel dispenser
- Reception desk
- Shower (1)
- Sink (1)
- Telemedicine conference table
- Video conferencing cameras (6)
- Waiting room chairs (15)

X-Ray

- Automatic film processor
- Cassette holder
- Developing hangers
- Film drier
- Film markers
- Mobile X Ray unit, digital
- X Ray aprons (2)
- X Ray cassettes (25)
- X Ray light
- X Ray stretcher

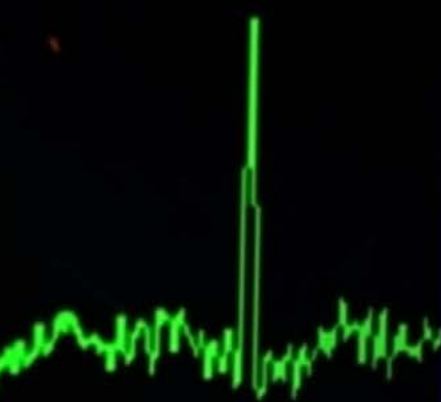
Air Filtration and Water

- HEPA filtration and negative or positive air system for clinics
- Commercial reverse osmosis

Security

- Alarm system
- Security cameras (25)
- Monitors (6)



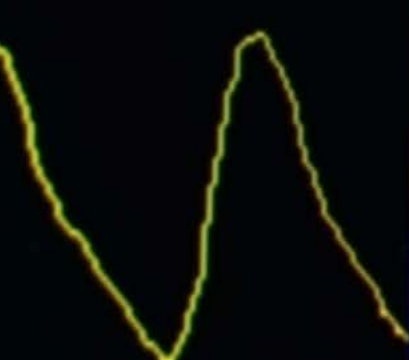


ECG
bpm
88

PR **(89)** ST LOWER IIs = 0.07mV



NIBP mmHg Auto
Adult Sys / Dia PR **(84)**
118/74
Mean **(86)** 0  Min



SpO2
%

98

